

**Electric 2-1/4" X 2-1/4"  
Mini Movements.**

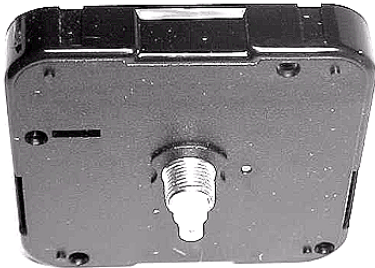


Compact electric movement the same size As our AA Quartz movements. 2-1/4" square. 5/16" Threaded mounting shaft. This movement uses the standard I Stack hands. **Hands not included.** 110 Volt/UL Listed 6' Brown Cord.

Each movement comes complete with mounting hardware

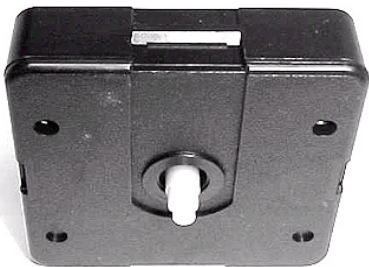
| Part no. | Dial Thickness     | Shaft Length | Price          |
|----------|--------------------|--------------|----------------|
| EM 316   | ...3/16" ... 9/16" | 1 to 5       | ... \$ 8.00ea. |
| EM 500   | ...1/2" ... 15/16" | 6 to 11      | ... \$ 7.75ea. |
| EM 750   | ...3/4" 1-3/16"    | 12 & up...   | \$ 7.50ea.     |

**AA Quartz with Push-On Hands**



Push-on Mounting with bushing. Threaded bushing will ensure the clock will continue to be tightly secured to the dial. Movement size 2-3/16" Square X 11/16" D Hand Included. **Batteries Not Included**

| Part no | Dial Thickness  | Shaft Length | Price       |
|---------|-----------------|--------------|-------------|
| CM 700  | .....1/8" ..... | 1/2" .....   | \$ 4.50 ea. |
| CM 740  | .....1/4" ..... | 3/4" .....   | \$ 4.50 ea. |
|         | 5 to 9          | .....        | \$ 4.25 ea. |
|         | 10 to 24        | .....        | \$ 4.00 ea. |



Push-On Mounting. No Hardware needed just snap in and push on the hands. Movement size is 2-7/32" Sq. X 5/8" D Hands Included. **Batteries Not Included**

| Part No. | Dial Thickness   | Shaft Length | Price       |
|----------|------------------|--------------|-------------|
| CM 046   | ..... 1/8" ..... | 3/8" .....   | \$ 4.50ea.  |
| CM 059   | .....5/16" ..... | 9/16" .....  | \$ 4.50 ea. |
|          | 5 to 9           | .....        | \$ 4.25 ea. |
|          | 10 to 24         | ...          | \$ 4.00 ea. |

**Push On Hands For AA Movements**

| Hand Style | Length of min.hand | Part No. Black | Part No. Gold |
|------------|--------------------|----------------|---------------|
|            | 2"                 | BH834          | GH835         |
|            | 2-3/4"             | BH836          | GH837         |
|            | 1-3/8"             | BH832          | GH833         |

**CONTINUOUS-SWEEP MOVEMENT**

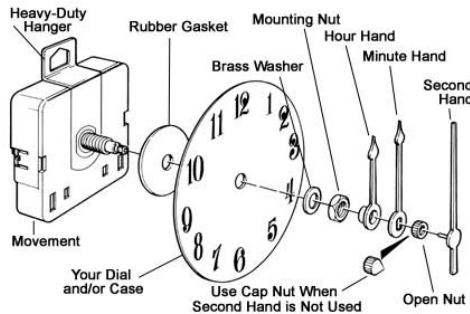


AA continous-sweep movement. Second hand moves smoothly around dial. Mounting Hardware. **Hands Not Included.**

**Batteries Not Included**

Movement size: 2-1/8" H X 2-1/8 W X 5/8 D. Brass shaft accommodates dial up to 1/4" thick. Shaft Length 5/8" 74.140 ..... \$ 10.50 ea. 6 and up ..... \$ 10.00 ea.

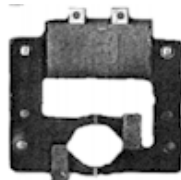
**Quartz Movement Installation**



Landshire X-W4 Fitup

LXW 400 ..... \$ 31.50 ea.

Telechron "H" Field & Coil Assembly



HFC3632 ..... \$ 12.00 ea.

Prices Subject To Change Without Notice.

**"H" Type Rotor**



M3632 60 cycle and 3.6 RPM

Replaces: M519, M714, M768, M1145, M1313, M1630 M1678, M2023, M2052, M2146, M2275, M2309 M2317, M2319, M2322, M2394, M2396, M2398 M2475, M2676, M2682, M3025, M3097, M3136 M3150, M3151, M3230, M3401, M3434, M3420 M3424, M3497, M3499, M3614, M3617

HR3632 ..... \$ 35.00 ea.  
"H" Rotor and "H" Field & Coil Assembly.  
HFA3632 ..... \$ 46.50 complete



**"S" ROTOR**

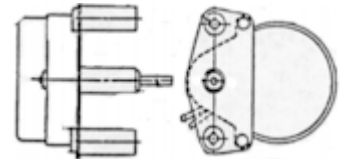
**"S" Field & Coil**

M3520 60 cycle and 3.6 RPM

Replaces: M2492, M3072, M3083, M3141, M3154 M3156, M3162, M3296, M3313, M3331, M3333 M3378 M3394, M3404, M3476, M3479, M3481 M3518, M3520, M3522, M3524, M3533, M3633 M3635, M3637, M3641

SR3520 ..... \$ 10.00 ea.  
Telechron "S" Field & Coil Assembly  
SFC3520 ..... \$ 10.00 ea.  
"S" Rotor & "S" Field & Coil Assembly  
SFA3520 ..... \$ 19.50 complete

**SIMPLEX MOTOR**



This motor will also replace some "B" Rotor applications.

One RPM 60 cycles

**SM 120 is Right Hand rotation**  
SM120 ..... \$ 42.50 ea.

3 or more ..... \$ 42.25 ea.

**SM125 is Left Hand rotation**  
SM125 ..... \$ 46.00 ea.

**JEFFERSON  
GOLDEN HOUR MOTOR**



Jefferson Golden Hour  
1/6 RPM (R) 27 Tooth gear.  
GH800 ..... \$ 47.75