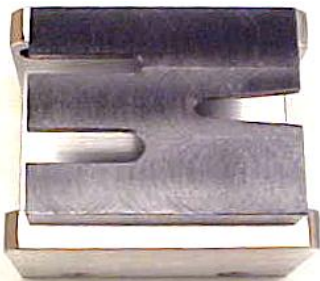


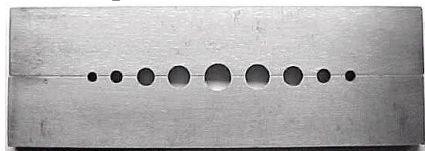
Bench Anvil and Holder



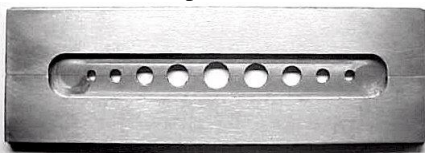
Bench anvil and holder as a set.
American Made

12.324 í í í í í í \$ 40.00 ea.

Split Stake for Vise



Top Side

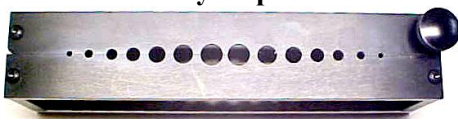


Under Side With Milled Slot
American Made

Split stake is made of two pieces of 1/4" Flat ground stock with a milled slot where the holes are to make 1/8" to easily hold lantern pinion and etc. Has 9 holes. Hole sizes 1/8, 9/64, 11/64, 7/32, 1/4, 9/32, 5/16, 11/32 and 3/8. 6" long X 2" wide.

12.321 í í í í í í \$ 56.50 ea.

Bench Style Split Stake



Top View



Side View

American Made

Bench split stake has 14 holes sizes size 3/32", 5/35", 7/32", 9/32", 11/32" 13/32", 15/32", 1/2", 7/16", 3/8", 5/16", 1/4", 3/16", 1/8",

Top is made of 2 pieces of 1/4 X 1 Flat ground stock. 10" long X 2" wide 2-5/8" high. 2" between top and bottom plate. This tool is also used for staking wheels on and off as well as working on lantern pinions.

12.325 í í í í í í \$ 92.50 ea.

Dapping Block



Dapping block handy for reforming Hand washers. The block is 2-1/2" sq. Hardened steel with 6 working surfaces With 17 various sized depressions up To 1-3/4" for forming all types of metals. 25.072 í í í í í í \$ 52.75 ea.

Dapping Punches



Set of 11 Dapping punches sizes 1/16ö to 1ö Handy for closing center shaft hole on clocks Also to reform hand washers.

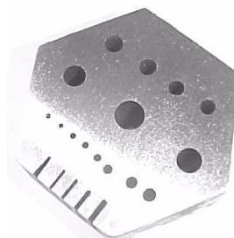
25.089 í í í í í í \$ 42.75 set.



Set of 12 Dapping punches in wood block. Sizes 1/2" to 1ö. Can form hand washers & Close center shaft hole in clocks.

25.712 í í í í í í \$ 41.50 set.

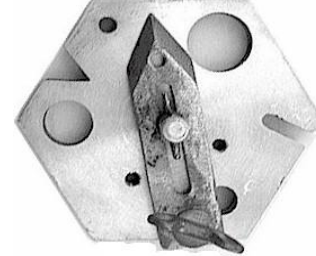
Hexagon Anvil



Used as a base for staking, riveting and Drilling of small parts. Case hardened and ground flat and smooth. Has 15 holes, graduated from 3/64ö to 1/4", and 5 milled slots. Measures 1-5/8ö across the flat side and 3/4" thick.

12.312 í í í í í í \$ 11.50

Drilling/Filing Tool Fixture



Made of Aluminum.

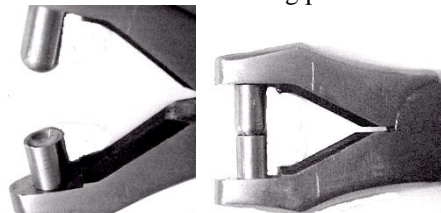
This tool is 4" hexagonal can be used for Third hand to holding parts that need to be Drilled, filed or cut. The aluminum fixture is 1/2" thick and 3 adjustment for the holding clamp..

12.329 í í í í í í \$ 22.50 ea.

Keystone Hand Washer Pliers And Leather Punch



Hand Washer forming pliers



Open View

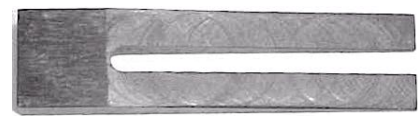
Closed View

You can use the pliers to reform the Shape of convex in the washer. By Changing the bottom anvil you can put one of the punches in the handle and use it for a leather punch. 8-3/4" long.

24.587 í í í í í í \$ 35.00 ea.

Taper Split Wedge

Taper split wedges to hold clock plates Apart when trying to adjust wheels. It slides between the plate and pillar sliding over the thread of the pillar to separate the plates. Two sizes of wedges.



Wedge 1/2" wide X 2" long X 1/4" thick. This wedge will work on mantle clocks.

12.327 í í í í í í \$ 20.00 ea.

Wedge 1" wide X 2" long X 1/4" thick This wedge will work on Floor Clocks..

12.328 í í í í í í \$ 25.00 ea.